

THORN CREEK  
**The Wasatch**



- 3,352 Sq. Ft.
- 5 Bedrooms & Loft
- 5.5 Baths
- Main Level Master
- 3 Car Oversized Garage



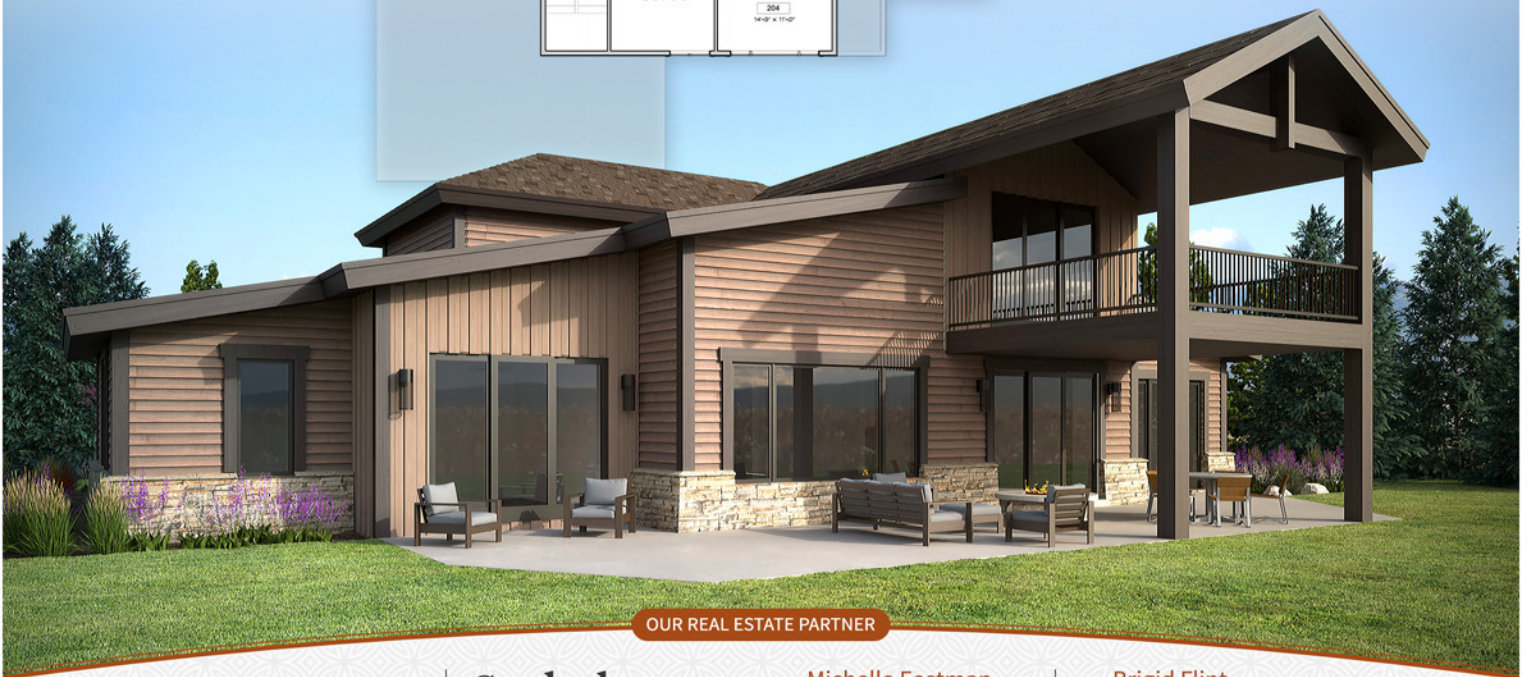
1st Floor



2nd Floor



Our largest model, the Wasatch, emphasizes main level living with ample space. Great room and gourmet kitchen open to indoor/outdoor living with covered outdoor decks on both the main level and 2nd floor. Main level master suite has it's own wing of the house with additional en-suite den/bedroom. Additional guest suite on main and two suites on the 2nd level, with additional loft, make for amazing guest space or room for family. 3 car oversized garage, and additional room for your favorite toys is an added bonus.



OUR REAL ESTATE PARTNER

Summit

**Sotheby's**  
 INTERNATIONAL REALTY

Michelle Eastman  
 435.640.6597  
 michelle@michelleeastman.com

Brigid Flint  
 435.640.9873  
 brigid@brigidflint.com



THORN CREEK  
**The Wasatch**



- 3,352 Sq. Ft.
- 5 Bedrooms & Loft
- 5.5 Baths
- Main Level Master
- 3 Car Oversized Garage

## Standard Quality Features

### Interiors

- Solid alder panel doors
- High quality raised panel alder cabinets
- Medium bronze patina, matte black patina or white bronze door hardware
- Painted or stained baseboards and casings
- Random width 3", 4", & 5" white oak, sanded and stained in great room, dining and kitchen
- Slate floors in entry, powder room and utility room
- Carpet in all bedrooms and closets
- Gas fireplace with stacked stone surround and wood mantle 6' high
- Powder room with brushed nickel, oil-rubbed bronze, or matte black bath fixtures
- Spacious, 9' ceilings
- 12' ceilings in the great room
- Square bead with smooth wall
- Laundry / mud room with built-in cabinetry
- Metal mesh railing (Uinta & Wasatch models only)

### Quality Exteriors

- Grand custom entry door, 42"X 96" alder with oil rubbed bronze hardware
- Covered deck
- Oversized two or three car attached garage
- Insulated steel garage doors
- Windsor double pane aluminum exterior clad wood windows throughout
- Stained cedar siding, moriah stone, and steel features
- 40-year architectural shingle with metal accented roof

### Available Upgrades

- Outdoor fire pit
- Epoxy floor in garage
- Gas barbeque connection in covered deck
- Pre-wired for exterior hot tub
- Hot and cold-water service in garage
- Wool carpet upgrade in bedrooms
- Stone to ceiling fireplace
- Steel detail, feature, or accent for fireplace
- Corral board no hearth fireplace
- 220V electric in garage
- Caesar stone upgrade countertop
- Raised paneled alder door cabinetry
- White farmhouse sink or concrete farmhouse sink
- Quartz slab backsplash in kitchen
- Accent wall options in reclaimed corral board
- Rustic painted shiplap accent wall
- Ceiling fans
- Water softener

### Kitchen

- Quartz countertops
- Textured flat panel slab doors or wood shaker style cabinetry
- Thermador stainless appliances, including gas range, paneled wood refrigerator, paneled dishwasher and microwave
- Stainless, oil rubbed bronze, or matte black kitchen fixtures
- Random plank, white oak sanded floors
- Subway tile backsplash, matte or glossy finish

### Five Fixture Master Bathroom

- Tile flooring, tub and shower surround
- Quartz countertops
- Brushed nickel, matte black, oil rubbed bronze, brushed nickel, or polished chrome bath fixtures
- Double vanities
- European frameless shower enclosure

### Miscellaneous

- 50 gallon water heater
- Central air conditioning
- R-23 wall and R-47 ceiling insulation
- Garage finish with paint & insulation
- Hose bib in garage



OUR REAL ESTATE PARTNER

Summit

**Sotheby's**  
INTERNATIONAL REALTY

**Michelle Eastman**  
435.640.6597  
michelle@michelleeastman.com

**Brigid Flint**  
435.640.9873  
brigid@brigidflint.com